



Authoritative facts about the skin from the [New Zealand Dermatological Society Incorporated](#).

[Home](#) | [Vascular skin problems](#)

Atrophie blanche

What is atrophie blanche?

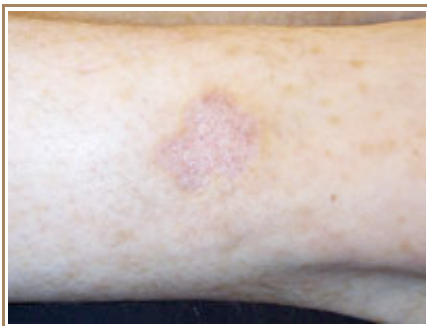
Atrophie blanche is the name given to a particular type of scar arising on the lower leg. It occurs after a skin injury when the blood supply is poor. It may arise in association with:

- [Livedoid vasculitis](#)
- [Venous insufficiency](#)
- [Diabetic vascular disease](#)
- Any injury to the skin of an ageing lower leg, such as following [cryotherapy](#) or [curettage and cautery](#) in the treatment of [skin cancers](#).

Atrophie blanche is characterised by:

- Star-shaped or polyangular, ivory-white depressed atrophic plaques
- Prominent red dots within the scar due to enlarged capillary blood vessels
- Surrounding pigmentation

Atrophie blanche



Curettage scar



Associated with discoid dermatitis



Venous eczema



Livedoid vasculitis



Severe scarring



Dermoscopic view

Related information

References

- Book: Textbook of Dermatology. Ed Rook A, Wilkinson DS, Ebling FJB, Champion RH, Burton JL. Fourth edition. Blackwell Scientific Publications.

On DermNet NZ:

- [Livedoid vasculitis](#)

Other websites:

- [Livedoid Vasculopathy](#) - emedicine dermatology, the online textbook

Books about skin diseases:

See the [DermNet NZ bookstore](#)

Author: Vanessa Ngan, staff writer

DermNet does not provide an on-line consultation service.

If you have any concerns with your skin or its treatment, see a [dermatologist](#) for advice.

Created 2004. Last updated 26 Dec 2006. © 2008 NZDS. Disclaimer.